

CASE STUDY:

Smart City Kielce

Client:

City of Kielce

Industry:

Public

Country:

Poland

Solution:

Qlik Sense



The implementation of Smart City in Kielce puts the city on the map of innovative solutions. Thanks to the intelligent use of data and modern technologies, Kielce will have a chance for sustainable development, effective management and improvement the life's quality of the residents.

Overview:

As part of the Smart City Kielce project, BPX has introduced in Kielce a Business Intelligence system, based on the Qlik Sense tool, which enables using data to manage the area and make effective decisions based on specific sources. With the new platform, the city will be able to respond to the needs of its residents by creating smart solutions in the areas of demographics, migration, transport, infrastructure and public services.

Context:

The project included two main goals. The first was to create a platform that allows residents for constant access to the information, presented with clear visualizations. The second challenge was the development of dedicated analytical applications, which allow the authority's employees to access and analyze all the data available for them, from different field systems, without manual merging or advanced technical skills.

Contact us:

przemyslaw.blicharski@bpx.pl
www.bpxglobal.com

CASE STUDY:

Smart City Kielce



Challenge:

The main challenge of the project was to implement the smart city concept by monitoring services, development and introducing data driven city management, including primarily:

- retrieving data that was inconsistent, came from different sources and lacked standardization,
- building a solution that will have greater flexibility than traditional data warehouse, while handling the ever-increasing volume of data,
- shaping urban policy based on available data, with the aim of creating new services and continuously monitoring the effects of actions taken.

Vision:

During the process of implementing the solution, our goal was to prepare the data in such a way that they presented real data in the form of indicators, charts, tables and maps, and were intuitive for any resident. Working with maps was crucial to our project, as most of the visualizations focused on presenting geographic data to residents. Qlik Sense, using the built-in GeoAnalytics component, enabled the presentation and visualization of spatial data in the form of maps, which cities collect the most.

The project was preceded by:

- urban data inventory,
- consultations and workshops,
- definition of indicators for assessing the city's condition, among others using ISO standards and formulas to compare with other cities,
- formation of an analytical team on the city and BPX side.

Contact us:

przemyslaw.blicharski@bpx.pl
www.bpxglobal.com

CASE STUDY:

Smart City Kielce



Solution:

Innovative initiative of Kielce, based on Qlik Sense Embedded Analytics, is a key step in the transformation towards a smart city. This ambitious undertaking is conditioned by the revolutionary power of open APIs offered by Qlik.

The decisive moment came with the integration of data from different sources and systems. The indicated action brought a breakthrough towards shared access to consistent information, which contributed to increased transparency across the urban landscape. As a result, Kielce's development is now data-driven and supported by clear visualizations, dashboards and maps.

Benefits:

- integration of data from multiple sources and systems,
- shared and current access to consistent information,
- optimization of the urban ecosystem management,
- transparency,
- monitoring the results of individual areas,
- management cockpits,
- user-friendly visualizations,
- demographic analysis,
- migration analysis,
- education analysis,
- detailed budget analysis,
- comparative analysis,
- ability to conduct free and multidimensional data analysis using an associative data engine.

Results:

- data centralization,
- attractive data visualization,
- accessibility for residents,
- monitoring the activities of specific areas.

Duration:

- 5 months.

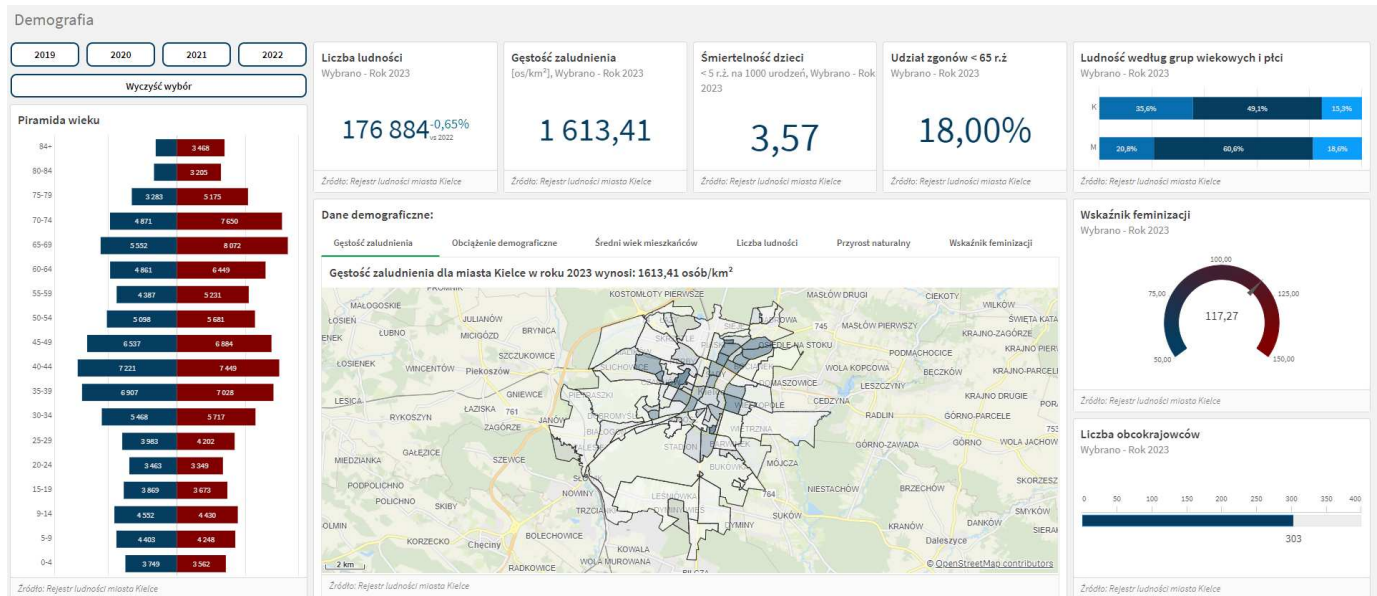
Contact us:

przemyslaw.blicharski@bpx.pl
www.bpxglobal.com

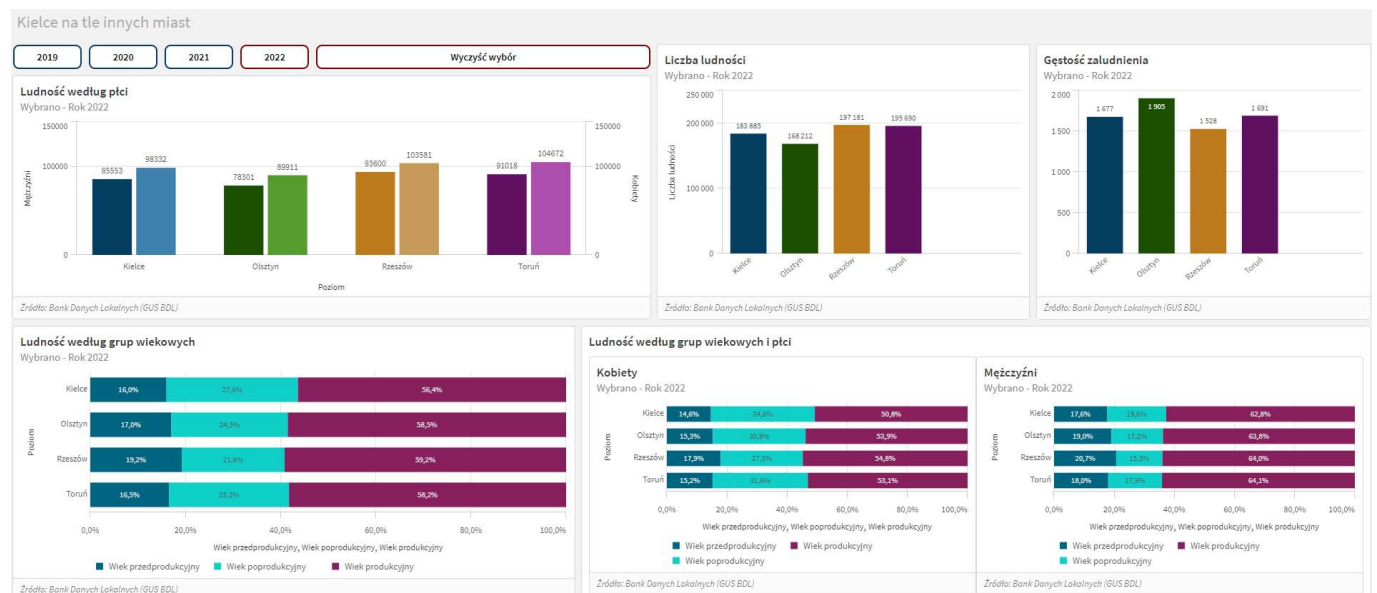
CASE STUDY:

Smart City Kielce - visuals

Demographic analysis



Comparative analyses: Kielce compared to other cities



Contact us:

przemyslaw.blicharski@bpx.pl

www.bpxglobal.com

Migration analysis

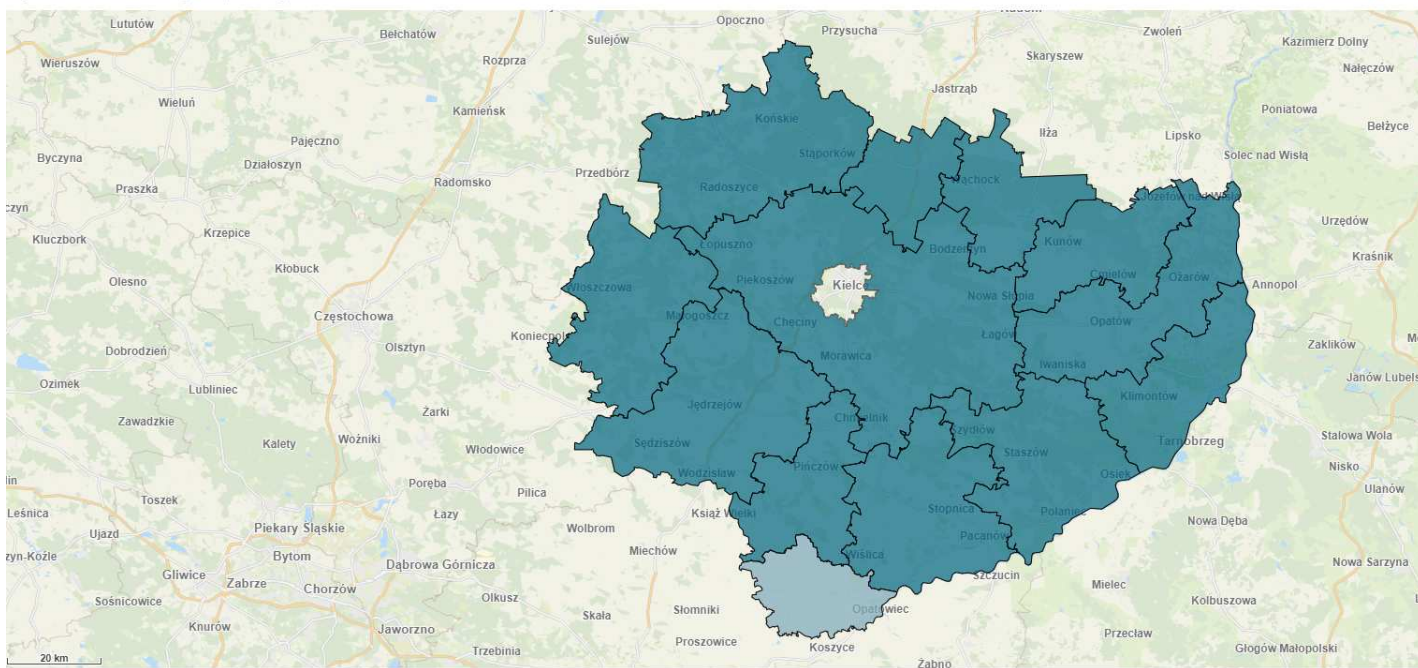
Napływ ludności do Kielc z innych jednostek samorządu terytorialnego

Wybrano - Rok 2019 Brak danych na poziomie jednostki



Napływ ludności do Kielc z innych jednostek samorządu terytorialnego

Wybrano - Rok 2019 Brak danych na poziomie jednostki



Contact us:

przemyslaw.blicharski@bpx.pl

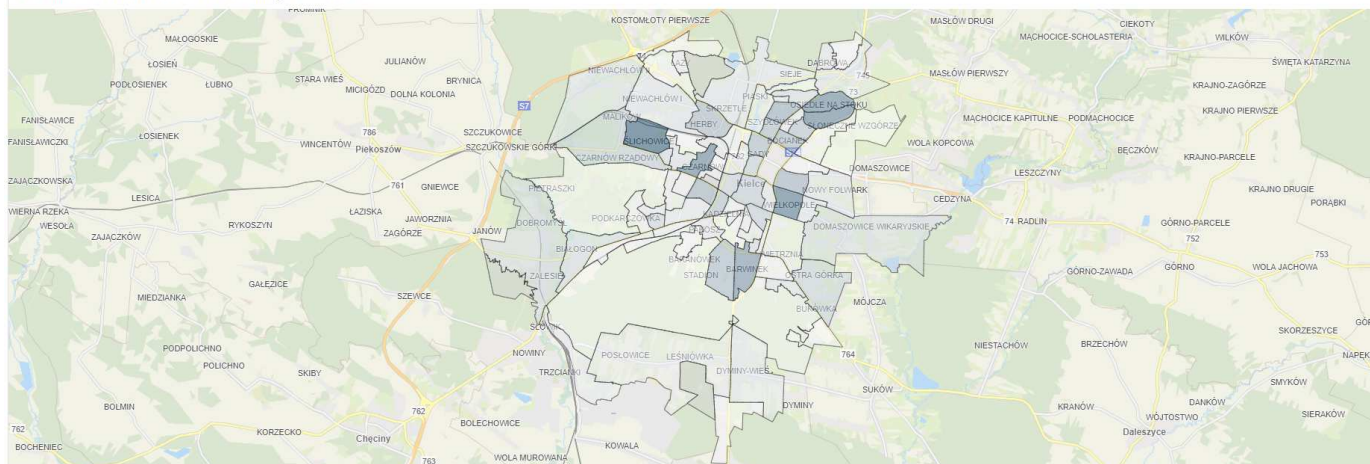
www.bpxglobal.com

Demographics

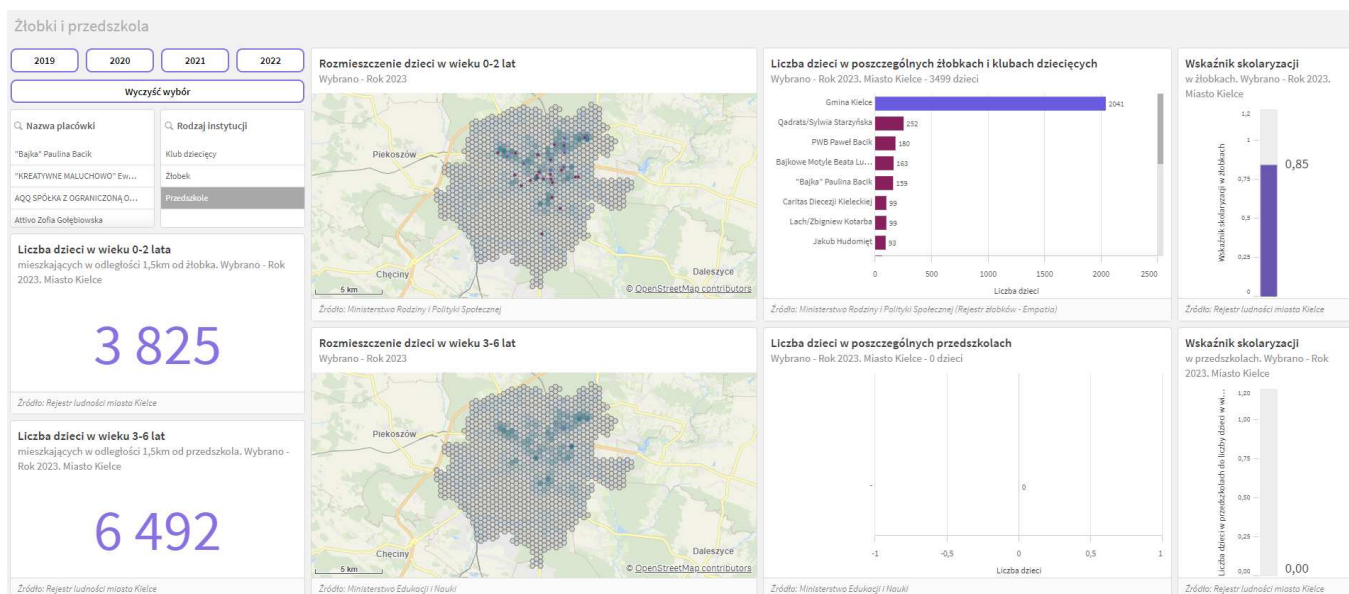
Dane demograficzne:

Gęstość zaludnienia Obciążenie demograficzne Średni wiek mieszkańców Liczba ludności Przrost naturalny Wskaźnik feminizacji

Liczba ludności dla miasta Kielce w roku 2020 wynosi: 183061



Nurseries and kindergartens

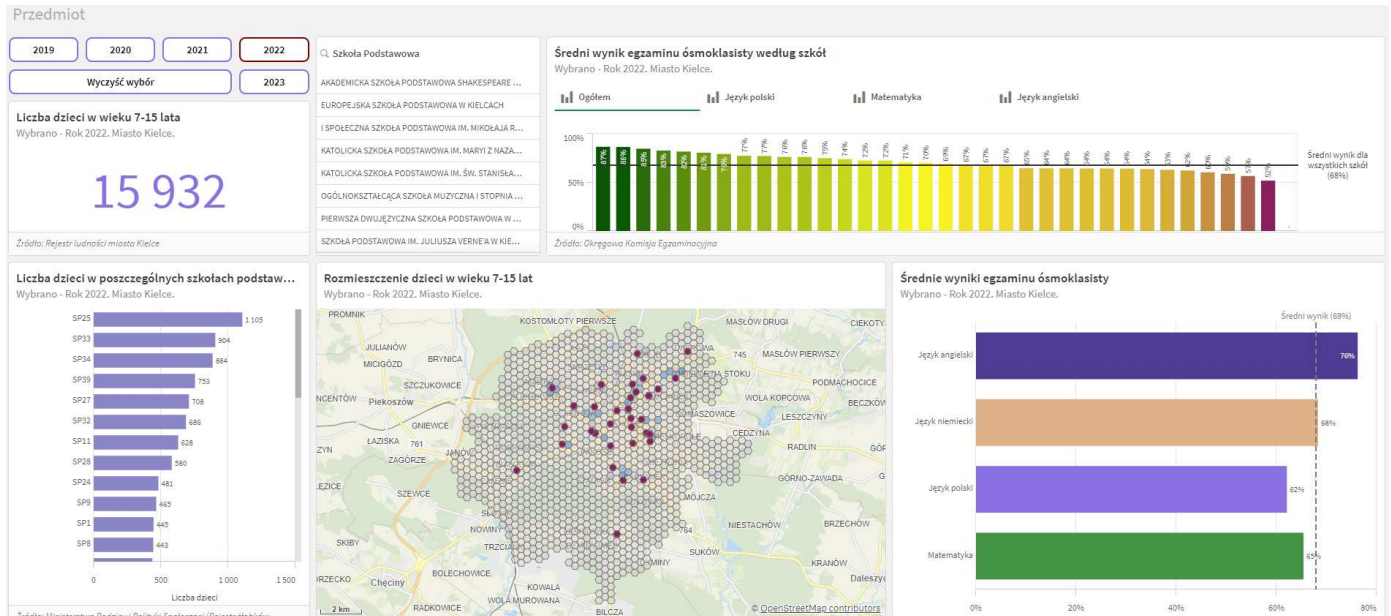


Contact us:

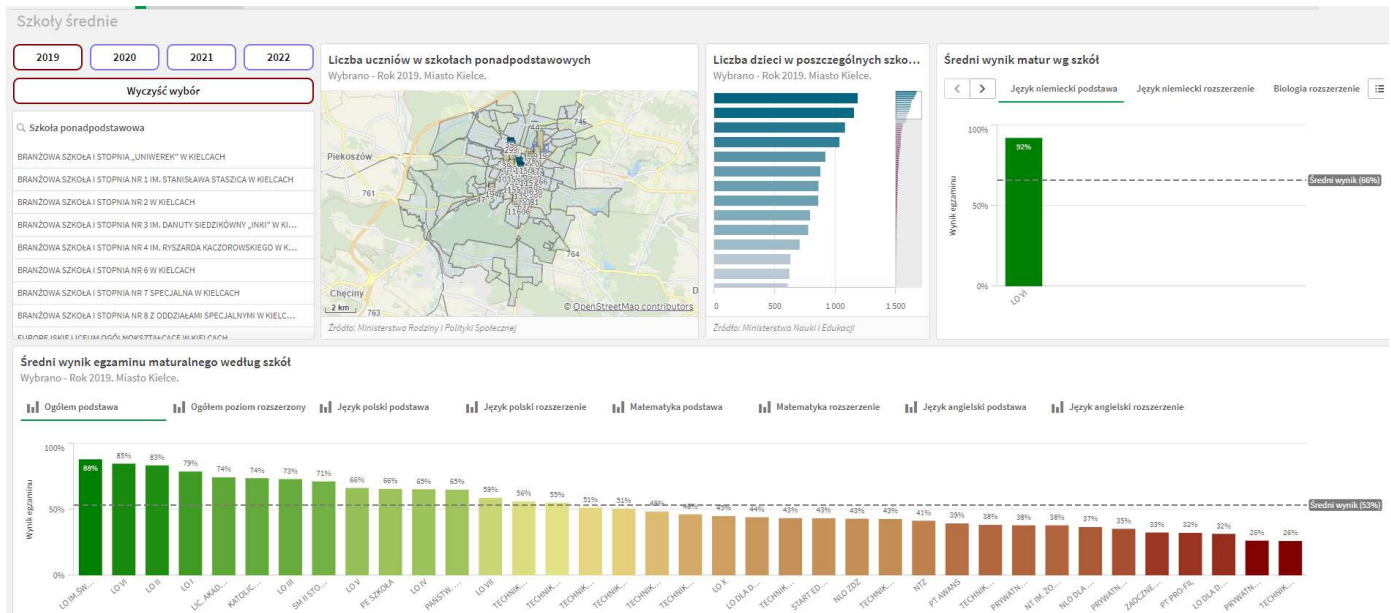
przemyslaw.blicharski@bpx.pl

www.bpxglobal.com

Primary schools



High schools



Contact us:

przemyslaw.blicharski@bpx.pl

www.bpxglobal.com